

RECORDED **FEB 23 1972** AT 11:05 O'CLOCK A.M.

RECEPTION NO. _____ JOHN B. HUISMAN, Recorder

CERTIFIED LAND CORNER RECORDATION

DESCRIPTION OF CORNER EVIDENCE FOUND, AND ORIGINAL RECORD (if known)

LOCATION

S.11-S.12

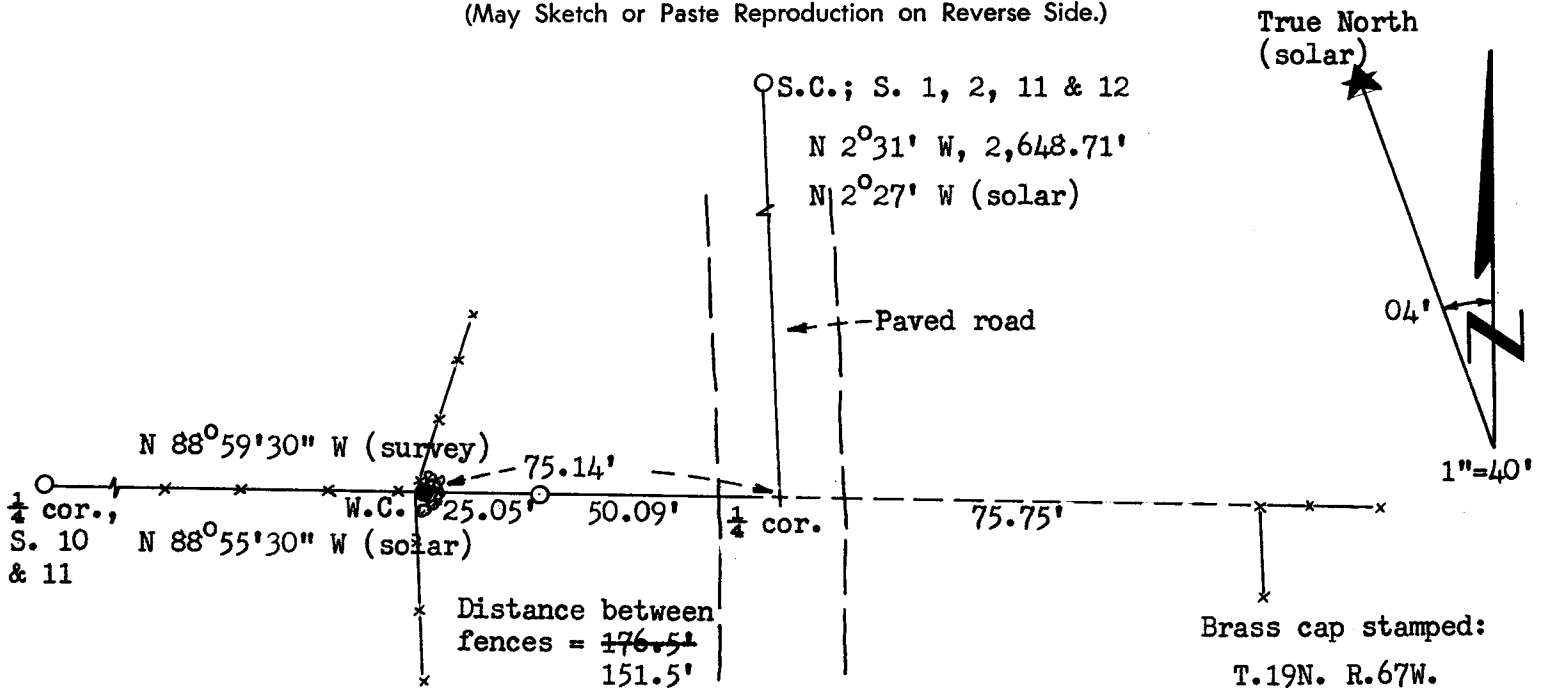
T.19N., R.67W.
6th P.M.

1. No monument found (obliterated corner).
2. G.L.O. record, "Set a Limestone 14 x 12 x 6 for 1/4 Sec. Cor." (Contract survey by Alfred M. Rogers)

DESCRIPTION OF MONUMENT AND ACCESSORIES ESTABLISHED TO PERPETUATE THE ORIGINAL LOCATION OF THIS CORNER:

1. Corner position determined at intersection of east-west fence (built by Henry Hanson) and mid-point of R/W fences along old Yellowstone Highway.
2. No monument set at corner position.
3. As a witness corner; Set a 1 1/2" dia. x 30" long galv. iron pipe with brass cap, 6" above sandy surface. Raised a rock mound around W.C.

SKETCH, WITH COURSE AND DISTANCE TO ADJACENT CORNER IF DETERMINED IN THIS SURVEY. (May Sketch or Paste Reproduction on Reverse Side.)



Note: 5/8" dia. x 24" long rebar w/ Surv KAP bears N 88°59'30" W, 50.09 feet distant from 1/4 cor.

Brass cap stamped:
T.19N. R.67W.
W.C.
1/4
S.11 S.12
LS 519 1972

I, R.L. Hudson certify that I have carefully performed or reviewed the work done on the diagrammed corner as reported on this recordation form and approve the same.

R.L. Hudson
Signature of Surveyor

Wyoming L.S. No. 519
Registration No.

STATE OF WYOMING,
Office of Clerk and Recorder,
County of Laramie

This "corner record" was filed for record on the 23rd day of February, 1972, was noted on the cross-index plat and is assigned page No. 19-67, in book No. ONE.

John B. Huisman County Official

Cross Index No. _____	T. _____	R. _____	Mer. _____
_____	T. _____	R. _____	Mer. _____
_____	T. _____	R. _____	Mer. _____
_____	T. _____	R. _____	Mer. _____
_____	T. _____	R. _____	Mer. _____
_____	T. _____	R. _____	Mer. _____
_____	T. _____	R. _____	Mer. _____

Photographed.....

Indexed.....

Posted.....

The State of Wyoming }
County of Laramie } SS

This instrument was filed for record
at 11:35 o'clock *AM* on the
23 day of *Feb*
A. D. 19 22 and duly recorded in
Book on page

John B. Williams

County Clerk & Ex-Officio Register of Deeds
By _____ Deputy